

Learn.com Player Installation Application Note

In order to view Learn.com CourseMaker/StreamMaker based course content, the user must have a proprietary Learn.com “player” installed on their machine. Installation of this player does require administrative access to the user’s PC, although once the player is installed, the user can view courses under his normal, possibly more limited, access mode.

A user who does have administrative control over his PC can install the Learn.com player by viewing the course. If the user’s PC does not have the Learn.com player installed or if his currently installed player is downlevel from what is required to play the course, the user will be prompted to download and install the latest version of the player.

Learn.com Player Download Center

In order to view Learn.com StreamMaker based courses, you must install our proprietary multimedia player. This is an automated download and installation process. Click the **Install Player Now** button to proceed.

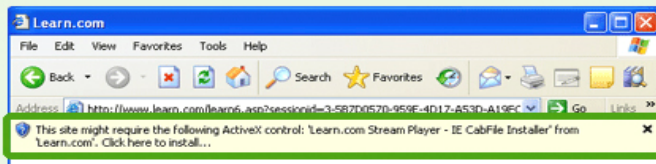
If you are behind a firewall or for any other reason cannot perform the automated download and installation, you can try the [manual installation method](#).

File size: 675 Kbytes
Download time estimate: 1 minute @ 56K modem
Version: 5.1.0115
Date posted: 3/15/2006

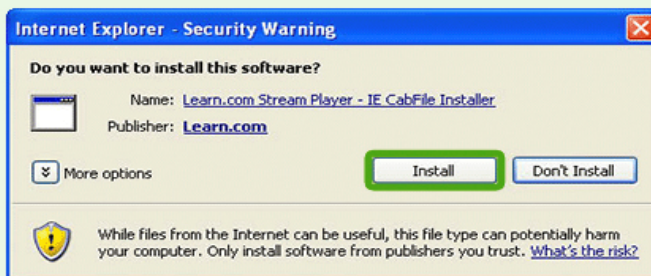
[Install Player Now](#)

Instructions

1. You must close all other browser windows before installing.
2. Installation of this player may require administrative access to your PC, which is normally provided by your IT department.
3. Click the **Install Player Now** button to automatically download and install the player.
4. Depending on your browser's security settings, after a short while, you may see a gold bar at the top of the page requiring you to click to continue installing the player.



5. Once the player is downloaded, you will see a Security Warning dialog box prompting you to install the downloaded player. Click Install to install the player.



6. When the installation is complete, the course will begin to play. However, you may be prompted to reboot if the player was already in use in another browser window prior to this installation.

The user may choose the “automatic download and installation” option by clicking the button **Install Player Now**. This option uses ActiveX technology to download and install a digitally signed CAB file installer. If the user has disabled this feature on his browser, or is behind a firewall which prohibits the downloading of ActiveX content, or for any other reason is unable to use this option to download and install the Learn.com player, he may click on the [manual installation method](#) link to download an executable file. The user can then manually run this executable to cause the Learn.com player to be installed.

MSI Installer

In a managed environment, where the user’s PC is managed remotely by a network administrator and the user is restricted as to what he may install on his PC, the user may be unable to install the Learn.com player. Instead, his network administrator must install the Learn.com player on the user’s PC. There are many desktop management/administration tools which can be used to accomplish this (Microsoft’s SMS System Management Server, ScriptLogic, RunAS (Windows utility), etc). They generally provide the administrator the capability of remotely deploying an application to their user base. This user base may consist of hundreds of PCs and the application may require that the network administrator have temporary administrative access to each of these PCs in order to install the application.

Learn.com provides an MSI version of the player installer (**Learn.com CoursePlayer.msi**) which can be used by many of these tools in order to be deployed (or “pushed”) to their user base. The file is in a standard Microsoft Windows Installer format. These tools install the MSI file by running the Windows MSI installer program:

```
msiexec.exe /i "Learn.com CoursePlayer.msi"
```

The Learn.com player does not require any special options to be set. The double quotes around the MSI file are necessary because there is a space in the file name.

The msiexec.exe program has many options. Sometimes, a network administrator may want to set the ALLUSERS property which can be set by one of the following commands:

```
msiexec.exe /i "Learn.com CoursePlayer.msi" /qb ALLUSERS="2"
```

Installs the player on a per user basis.

```
msiexec.exe /i "Learn.com CoursePlayer.msi" /qb ALLUSERS="1" (default)
```

Installs the player on a per machine basis.

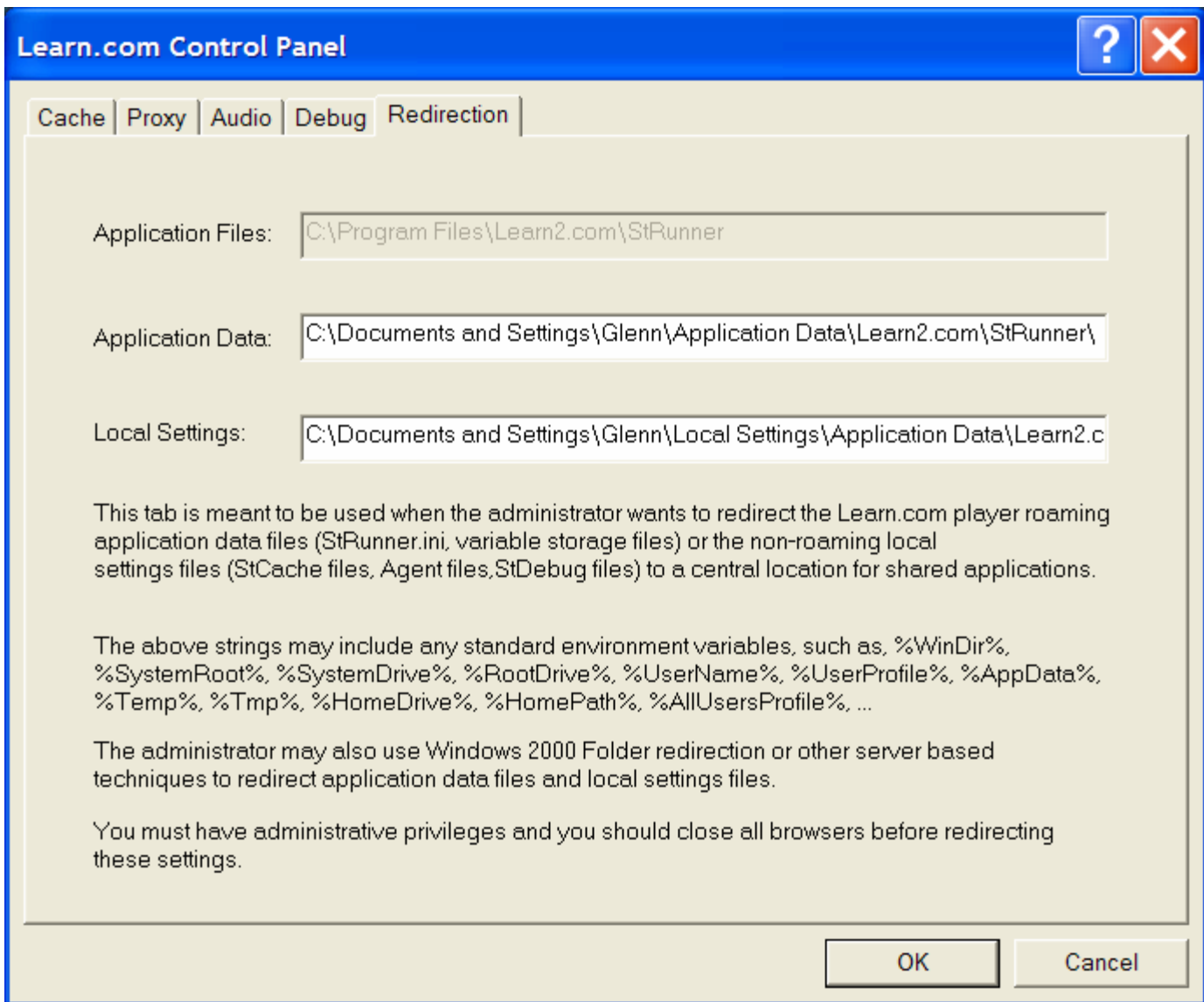
The /qb option specifies that the msiexec.exe will display a basic user interface during the installation process.

Folder Redirection

The control panel applet **Learn.com Stream Player** has a **Redirection** tab which allows the network administrator to change the locations of the roaming and non-roaming folders nominally created and used by the Learn.com player, once the player has been installed.

The use of this feature is normally not necessary as the default locations will usually suffice. However, in a shared environment, such as a terminal server, the network administrator may decide that the player’s roaming and non-roaming folders should be on the %RootDrive% drive instead of wherever the default location for those folders are.

See the next section **Registry and Folder Locations** for a list of the registry locations and folders created and used by the Learn.com player.



Registry and Folder Locations

Following are the registry and folders created and used by the Learn.com player. Some of these are created at installation time and others are created on a per user basis at the time the user first views a course. Note that the application files are always installed to the **<ProgramFiles>** folder. Other working files and folders are created on a per user basis in the user's roaming and non-roaming profiles. The locations of these profiles have default locations, but are ultimately controlled by the network administrator.

Files and folders created in the user's roaming profile travel with the user. If the user logs in on another PC (which has the Learn.com player installed) then those files which were in his roaming profile are available to him on the other PC. The user's player configuration file (**strunner.ini**) and local variable storage files are located in the user's roaming profile.

Files and folders created in the user's non-roaming profile stay on the PC on which they were created. The user's player cache folder and debug folder are located in the user's non-roaming profile.

In the list below, <ProgramFiles> is typically set to **C:\Program Files**, <Documents and Settings> is typically set to **C:\Documents and Settings** and <user-profile> is the Windows login name of the user.

- **HKEY_LOCAL_MACHINE\SOFTWARE\Learn2.com\StRunner: AppPath**
Registry location which contains path to where the Learn.com player application files are installed. This is set to <ProgramFiles>\Learn2.com\StRunner.
- **<ProgramFiles>\Learn2.com\StRunner**
Folder location which contains the installed Learn.com player application files.
- **< Documents And Settings>\<user-profile>\Application Data\Learn2.com\StRunner\strunner.ini**
The user's player configuration file.
- **< Documents And Settings>\<user-profile>\Local Settings\Application Data\Learn2.com\StRunner\StCache**
Folder location which contains the cache files created by the player as courses are viewed. It also contains the agent cache files if the course contains agents. The **Cache** tab in the **Learn.com Stream Player** control panel applet allows the user to flush this cache or change its size.
- **< Documents And Settings>\<user-profile>\Local Settings\Application Data\Learn2.com\StRunner\StDebug**
Folder location which contains the debug files created by the player as courses are viewed when debug logging is enabled. The **Debug** tab in the **Learn.com Stream Player** control panel applet allows the user to enable/disable debug logging.