

PUBLIC MEETING – PRELIMINARY DRAWINGS

September 9, 2017

PETER GISOLFI ASSOCIATES

ARCHITECTS, LANDSCAPE ARCHITECTS, LLP.

IMAGINE
HALF HOLLOW HILLS
COMMUNITY LIBRARY

Half Hollow Hills Community Library Public Meeting – Design Presentation

Community Meetings

- Listening Tour
 - Saturday, July 8 at 1–3 PM (DH) OR 3:30–5 PM (M)
 - Tuesday, July 11 at 7–9 PM(DH)
- Preliminary Drawings
 - Wednesday, August 2 at 2–4 PM (DH)
 - Wednesday, August 30 at 7–9 PM (DH)
- Presentation of Design
 - Saturday, September 9 at 12–2 PM (M) OR 3–5 PM (DH)
 - Wednesday, September 20 at 10 AM–12 PM (DH)
 - Thursday, September 28 at 7–9 PM (DH)
- Budget Vote
 - Tuesday, October 3 at 9:30AM-9 PM (DH)

Invite your friends and neighbors
Stay involved!

The Value of the Library



BORROW FROM THE LIBRARY vs PURCHASE/SUBSCRIBE ON YOUR OWN		
Museum Pass to the Museum of Modern Art	\$0 for five people	\$25 (cost/adult) × 5
Regents Review Course	\$40/course	A private tutor averages \$185/hour
Learn on lynda.com	\$0	Basic membership \$19.99/month × 12 months
Download Magazines through Flipster	\$0	Average newsstand cost is \$3.99/issue
Babies Boogie Classes (mommy & me music class)	\$0	Music class cost is \$40 (new member fee) + \$109/month per child

The Half Hollow Hills Community Library is your GO TO place for information, education and recreation.

Did You Know?

- [20,000](#) people walked through the doors last month

Last year...

- [76,226](#) patrons used our Wi-Fi
- About [40](#) different community groups use the library regularly
- [9,289](#) people attended [496](#) Children's Programs
- [2,235](#) teens earned more than [44,700](#) community service hours
- Our Reference librarians answered more than [41,000](#) questions

In the past two years...

- More than [140,000](#) people attended library events and meetings in Dix Hills

Melville Branch Enhancements

Half Hollow Hills Community Library - Melville Site Improvement Project



Brick Pavers



Bench



Proposed Site Plan



Site Lighting - Pole



Book Drop



Pergola - Fiberglass



Planting Bed

John Tanzi Architect
115 North Country Road
Stony Brook, NY 11790
631-751-0108
www.jtarchitects.net

Architecture
Engineering
Interiors



IMAGINE the Possibilities

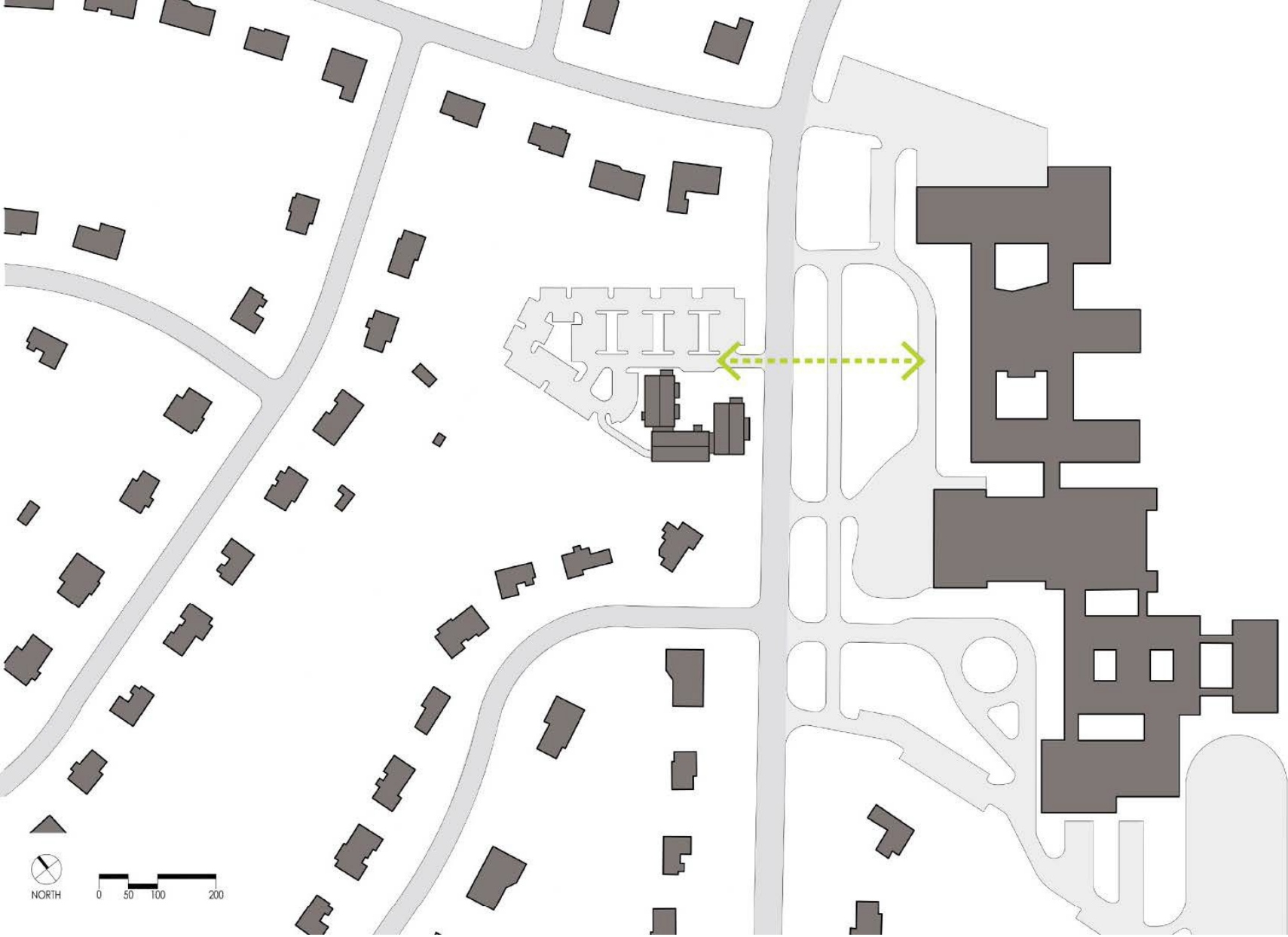
- Theater for performances and lectures
- Lots and lots of meeting space
- Proper flooring for exercise
- Makerspaces and craft room for all ages
- Access to state-of-the-art technology
- Beautiful outdoor space
- Storytime room for children
- Books
- Café
- More parking
- ADA Compliance
- Fire sprinklers
- And more. . . .



NORTH
SCALE: 1"=32'
0 16 32 64

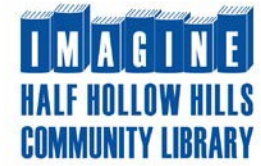
PROPOSED SITE PLAN
September 9, 2017
PETER GISOLFI ASSOCIATES
ARCHITECTS, LANDSCAPE ARCHITECTS, LLP.





PROPOSED FIGURE GROUND

September 9, 2017
PETER GISOLFI ASSOCIATES
ARCHITECTS, LANDSCAPE ARCHITECTS, LLP.





NORTH
SCALE: 1"=32'
0 16 32 64

PROPOSED SITE PLAN
September 9, 2017
PETER GISOLFI ASSOCIATES
ARCHITECTS, LANDSCAPE ARCHITECTS, LLP.

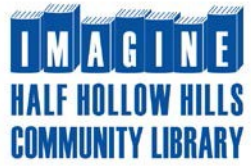




- PUBLICLY ACCESSIBLE
- COMMUNITY OUTDOOR SPACE
- STAFF AND MECHANICAL

PROPOSED SPATIAL ALLOCATION

September 9, 2017
 PETER GISOLFI ASSOCIATES
 ARCHITECTS, LANDSCAPE ARCHITECTS, LLP.





FIRST FLOOR PLAN

September 9, 2017
 PETER GISOLFI ASSOCIATES
 ARCHITECTS, LANDSCAPE ARCHITECTS, LLP.





FIRST FLOOR FURNITURE PLAN

September 9, 2017

PETER GISOLFI ASSOCIATES

ARCHITECTS, LANDSCAPE ARCHITECTS, LLP.



SECOND FLOOR PLAN

September 9, 2017

PETER GISOLFI ASSOCIATES

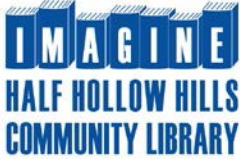
ARCHITECTS, LANDSCAPE ARCHITECTS, LLP.

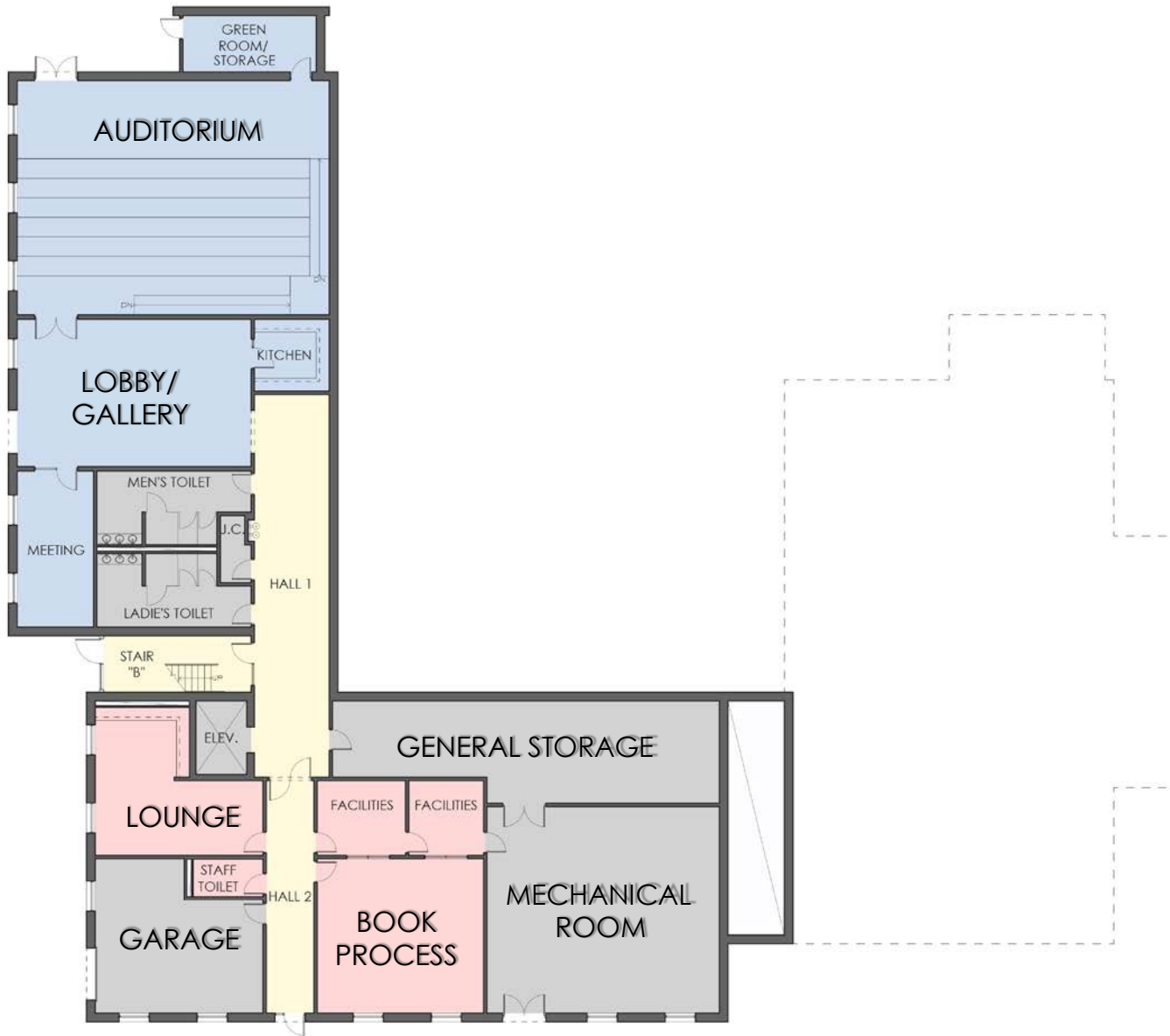


SECOND FLOOR FURNITURE PLAN

September 9, 2017

PETER GISOLFI ASSOCIATES
ARCHITECTS, LANDSCAPE ARCHITECTS, LLP.





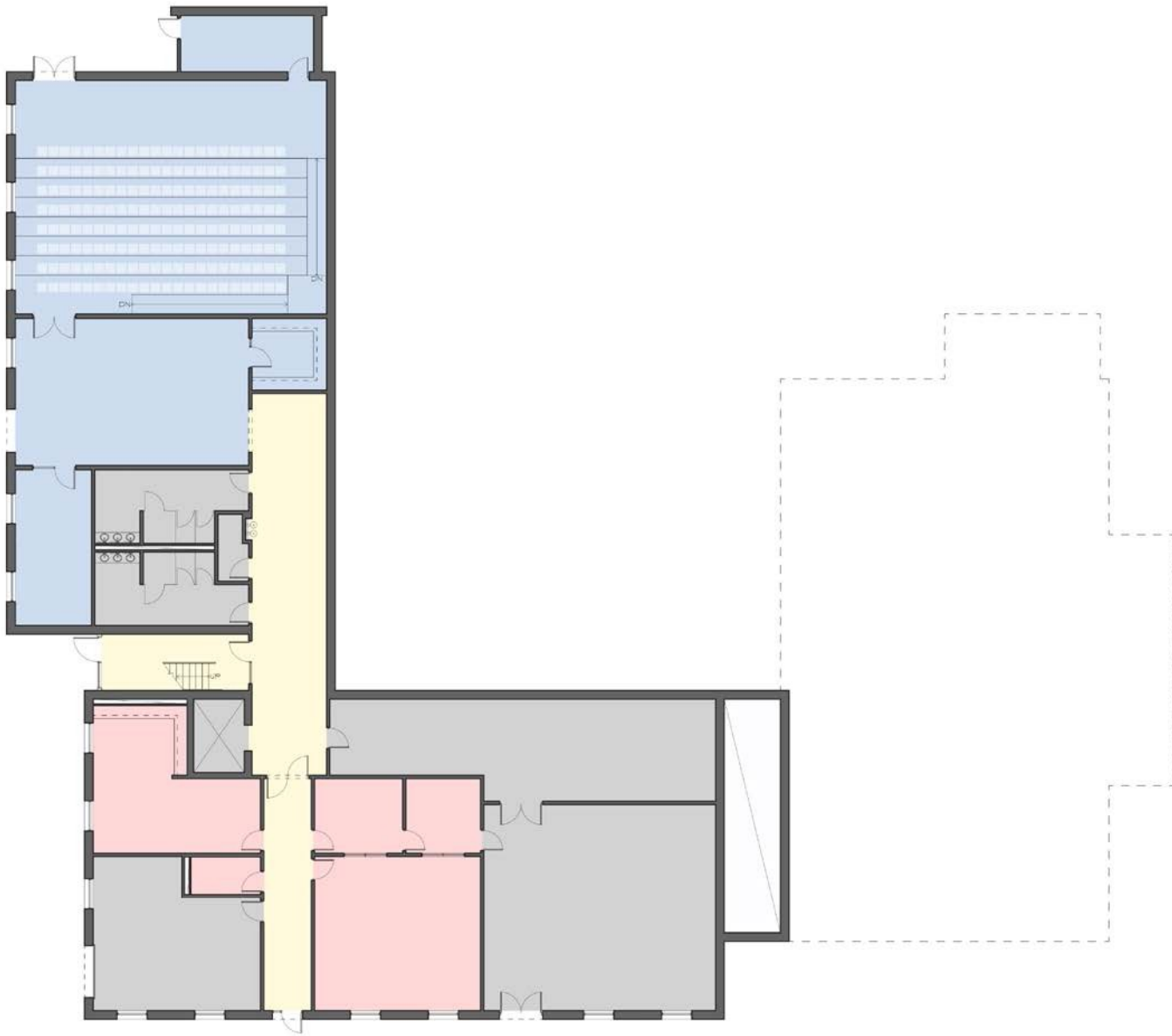
GROUND FLOOR PLAN

September 9, 2017

PETER GISOLFI ASSOCIATES

ARCHITECTS, LANDSCAPE ARCHITECTS, LLP.





GROUND FLOOR FURNITURE PLAN

September 9, 2017
PETER GISOLFI ASSOCIATES
ARCHITECTS, LANDSCAPE ARCHITECTS, LLP.

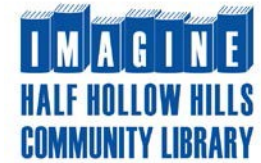


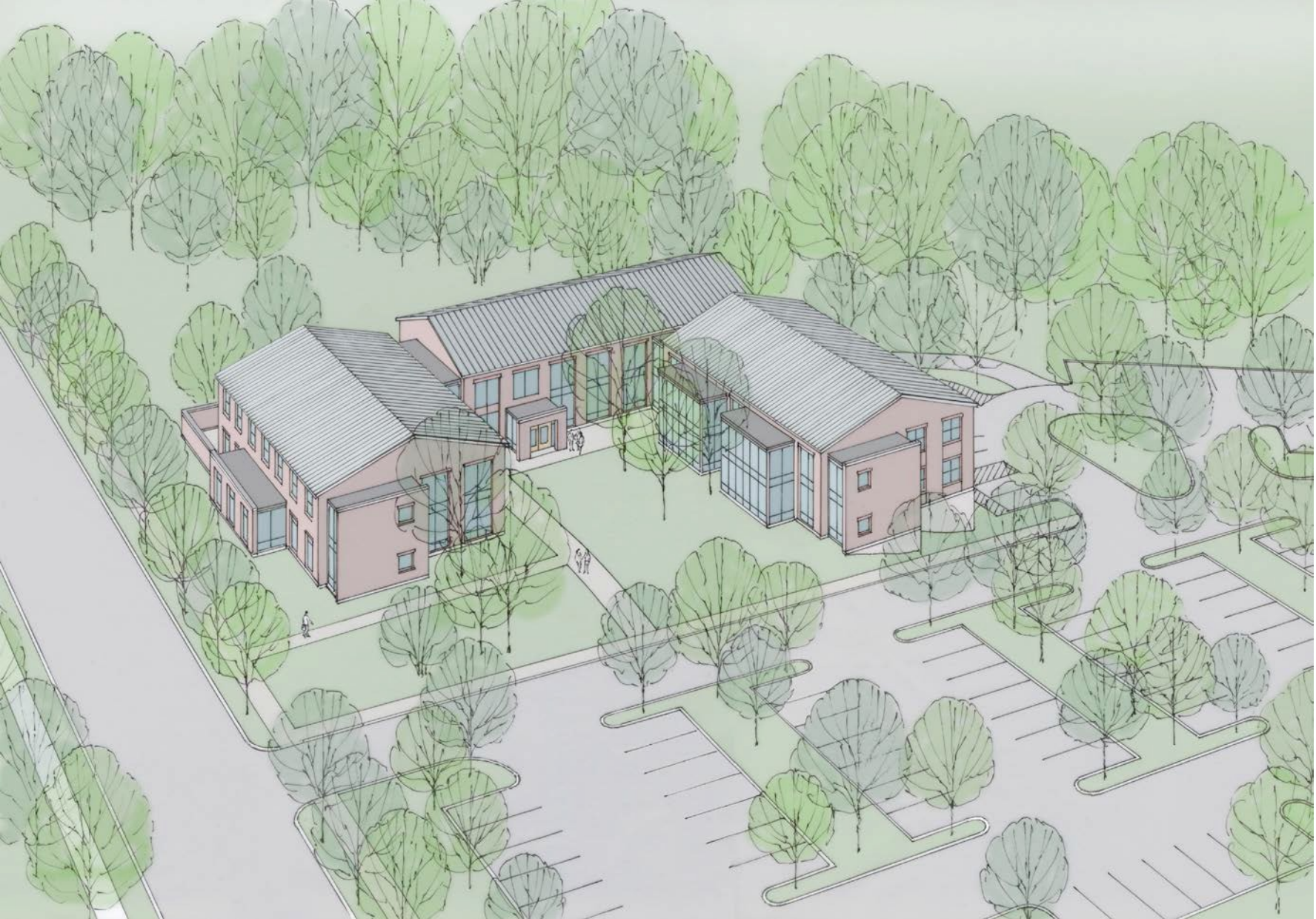


SCHEMATIC BIRD'S EYE VIEW

September 9, 2017

PETER GISOLFI ASSOCIATES
ARCHITECTS, LANDSCAPE ARCHITECTS, LLP.

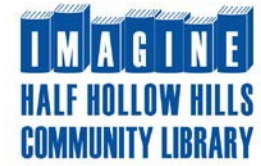




SCHEMATIC BIRD'S EYE VIEW

September 9, 2017

PETER GISOLFI ASSOCIATES
ARCHITECTS, LANDSCAPE ARCHITECTS, LLP.





SCHEMATIC COURTYARD PERSPECTIVE

September 9, 2017

PETER GISOLFI ASSOCIATES
ARCHITECTS, LANDSCAPE ARCHITECTS, LLP.

IMAGINE
HALF HOLLOW HILLS
COMMUNITY LIBRARY

Typical Cost per household

\$3.85/MONTH FOR 20 YEARS*

*Assumes the average assessed value of \$6,000 creating a \$45/yr increase to the tax bill

Budget Summary

• Project Construction Costs	\$14,749,367
• Materials	
• Labor	
• Cost Contingency	
• Professional Services	\$3,466,146
• Architects/Consultants	
• Project Manager	
• Testing	
• Legal	
• Moving/Storage	
• Technology	
• Melville Branch Renovation	\$1,000,000
• Parking Lot Improvements	
• Miscellaneous Maintenance	
• Total Project Cost	\$19,215,513

Community Meetings

- Listening Tour
 - Saturday, July 8 at 1–3 PM (DH) OR 3:30–5 PM (M)
 - Tuesday, July 11 at 7–9 PM (DH)
- Preliminary Drawings
 - Wednesday, August 2 at 2–4 PM (DH)
 - Wednesday, August 30 at 7–9 PM (DH)
- Presentation of Design
 - Saturday, September 9 at 12–2 PM (M) OR 3–5 PM (DH)
 - Wednesday, September 20 at 10 AM–12 PM (DH)
 - Thursday, September 28 at 7–9 PM (DH)
- Budget Vote
 - Tuesday, October 3 at 9:30AM-9 PM (DH)

Invite your friends and neighbors
Stay involved!

VOTE

Tuesday, October 3, 2017

Dix Hills Building

9:30 AM – 9 PM

QUESTIONS & COMMENTS



September 9, 2017
PETER GISOLFI ASSOCIATES
ARCHITECTS, LANDSCAPE ARCHITECTS, LLP.

